

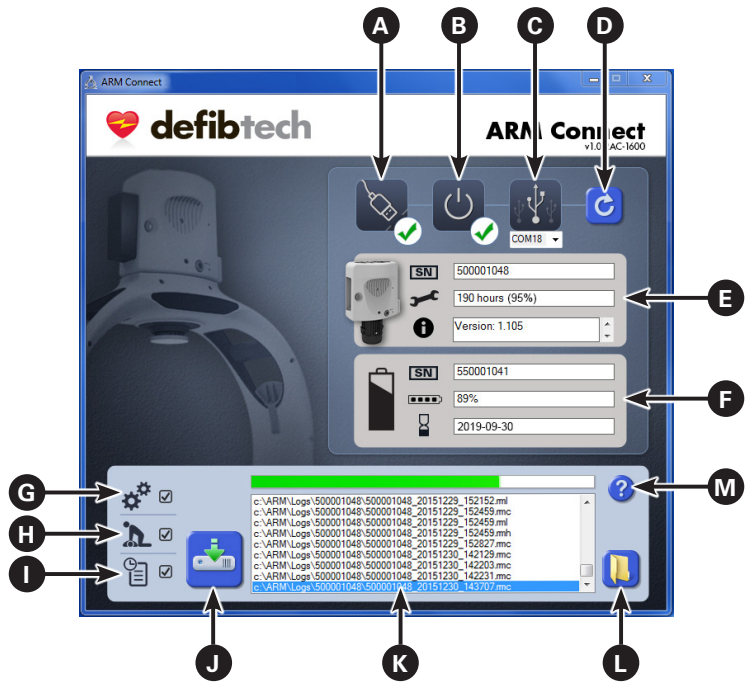
**ARM Connect Software Instructions**

Data Retrieval Software for the Defibtech RMU-1000 Automated Chest Compression System

ARM Connect is a PC-based software program that is intended to allow users of the Defibtech RMU-1000 Automated Chest Compression (ACC) System to connect the ACC's Compression Module via USB to retrieve configuration data and log files. The downloadable software and installation instructions (including minimum system requirements) are available at [www.defibtech.com/armconnect](http://www.defibtech.com/armconnect).

ARM Connect software includes the following capabilities:

- Establishing a USB connection to the ACC's Compression Module.
- Displaying the status of the connected Compression Module.
- Selecting a set of configuration and data files to be retrieved from the Compression Module.
- Storing configuration and log files to the local host PC for further manual distribution.



**STEP 1:  
Download and Install Software**

Go to [www.defibtech.com/armconnect](http://www.defibtech.com/armconnect) to download ARM Connect software, making sure that your PC meets the minimum system requirements listed. Launch the installer and follow the on-screen instructions until installation is complete.

**STEP 2:  
Connect to Device**

Connect the ACC's Compression Module to the host PC via a USB cable (USB-A to Mini-B). The Module's USB (Mini-B) port is located on the underside of the device, as shown at right. Power on the Module by pressing and holding its power button for approximately 2 seconds. Launch ARM Connect software by double-clicking the ARM Connect shortcut icon (shown at left) on your PC's desktop.



- A. Connection Status.** Indicates if a USB connection has been established between the Compression Module and the host PC. If connected, a green check mark appears. If a connection has not been made, a red "X" appears.
- B. Power Status.** Indicates power status of a successfully connected Compression Module. If powered on, a green check mark appears. If powered off, a red "X" appears. **NOTE:** If the Compression Module is running from battery power, it is recommended that the battery charge be at least 20% capacity while using ARM Connect.
- C. USB Port Connection/Selection.** When the Compression Module has been detected, the connected COM port is displayed below the USB port icon. If more than one Compression Module is connected to the PC, the user may select which unit to be actively connected to the software by changing the COM port via the listing shown in the drop-down menu.
- D. Refresh Button.** Used to retry/refresh the connection to the USB port manually.

**STEP 3:  
View Device Status**

ARM Connect displays the following information about the ACC's Compression Module:

- E. Unit Information Area: Compression Module.** Shows Compression Module information including serial number, time remaining (in hours and percentage usage) until required maintenance, and system software version number.
- F. Unit Information Area: Battery Pack.** Shows information about the Battery Pack in the Compression Module including serial number, battery charge, and battery expiration.

**STEP 4:  
Extract Data**

Select the data types to extract and initiate the extraction process. **NOTE:** For support purposes, Defibtech recommends that all three data types described below in G, H, and I be extracted. As such, all three extraction selection checkboxes default as checked.

- G. Extract Selection Checkbox: Configuration.** Indicates that configuration files will be extracted when the Extract Data Button (J) is pressed. **NOTE:** A configuration data extract will always be performed, no matter what other extract selections are made in the LOG and HISTORY extract selection checkboxes (H, I).
- H. Extract Selection Checkbox: Log.** When checked, log files (detailed compression data from approximately the last hour of device operation) will be extracted when the Extract Data Button (J) is pressed. If log files are not desired, uncheck this selection's checkbox.
- I. Extract Selection Checkbox: History.** When checked, history files (significant events since the device was manufactured) will be extracted when the Extract Data Button (J) is pressed. If history files are not desired, uncheck this selection's checkbox.
- J. Extract Data Button.** Used to start the data extraction process. When pressed, the types of extract data selected from the checkboxes (G, H, I) will be saved to the C:\ARM\Logs directory on the PC. A green download bar will appear above the Extracted Files List (K), indicating progress of the data extraction. When extraction is complete, the download bar will disappear.

**NOTE:** Turn off the Compression Module when the data extraction process is complete to conserve battery power. Follow the RMU-1000 User Manual steps to prepare the RMU-1000 for clinical use.

**STEP 5:  
Send Data to Defibtech Support**

Select extracted data files and attach them to an e-mail to Defibtech support ([support@defibtech.com](mailto:support@defibtech.com)).

- K. Extracted Files List.** Any previously extracted files are shown here. As new extracts are performed, this list will be updated with the additional files.
- L. Open Data Log Folder Button.** After clicking on and highlighting a desired file from the Extracted Files List (K), pressing the Open Data Log Folder button will open the contents of C:\ARM\Logs (or any directory where extracted files are saved to) in Windows Explorer. The user may then select what to do with any file in the directory using Windows Explorer functionality. **NOTE:** Defibtech recommends that extracted data files not be renamed.
- M. Help Button.** Displays the ARM Connect instruction sheet.

For the latest versions of user documentation or software, visit [www.defibtech.com/armconnect](http://www.defibtech.com/armconnect).

For additional assistance, contact Defibtech Customer Service using the contact information below.



Copyright © 2017 Defibtech, L.L.C.  
All Rights Reserved.

The Defibtech RMU-1000 ACC User Manual is a supplement to this document. Information in this document is subject to change without notice.

For patent information, see [www.defibtech.com/support/patents](http://www.defibtech.com/support/patents).