

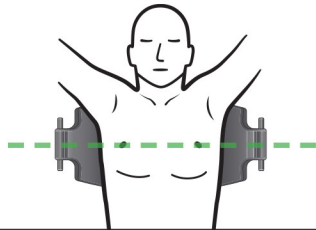
# RMU-1000 Quick Reference Guide

FOR USE AS AN ADJUNCT TO MANUAL CPR

## Before and during deployment of the RMU-1000:

- Confirm that the patient is unresponsive and not breathing.
- Start manual compressions.
- Minimize compression interruptions.
- Perform manual compressions whenever possible.

1



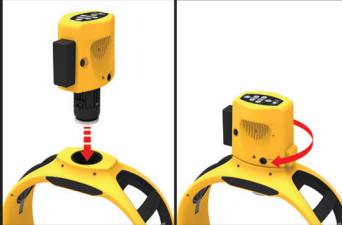
Place Backboard under patient and expose chest.

2




Attach Frame to Backboard, with patient's arms outside the Frame.

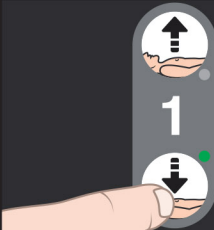
3



Insert Compression Module with Patient Interface Pad installed into Frame (down and twist).

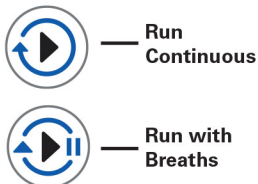
Turn on (press and hold  for at least 1 second).

4



Adjust Piston height until it touches the patient's chest.

5



Start compressions.  
Apply Stabilization Strap.